

Krispy Kreme - Thaw & Serve



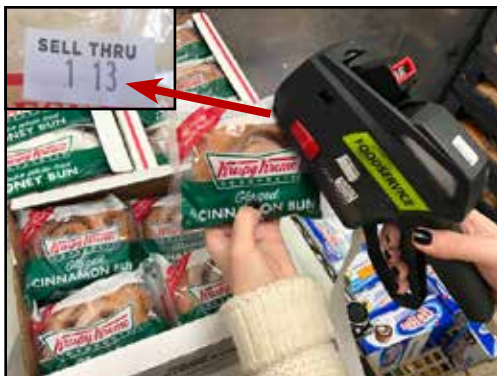
1



2



3



4



5

Delivery

1. Products will be received via wholesaler along with other frozen/perishable items.

Storage

2. If back stock is kept, store in freezer. **DO NOT STORE IN COOLER** - this will cause mold. Follow this procedure to guarantee freshest product to your guests.

Thawing

3. Once product is needed on shelf, pull entire caddy to thaw for at least 60 minutes on prep table. **DO NOT THAW IN COOLER!**
4. After product is properly thawed for 90 minutes, date each product individually. Place sticker in upper right hand corner of each package in caddy.

Inset Picture: Use this format for all product dating.

Merchandising

5. Merchandise all product in the caddy and display on the designated shelf or designated rack.

